

# Hawk-Seal Application

# Versus

# Seal coat-type applications



**Penetrates in three applications!**  
Surface life is extended.



Seal coat worn off after 9 months.



(Untreated) Three days after rain. (Treated) One day after rain.

**Treated surface is waterproof!**



Seal coats make asphalt dry and brittle. Maintenance costs are increased and surface life is shortened.



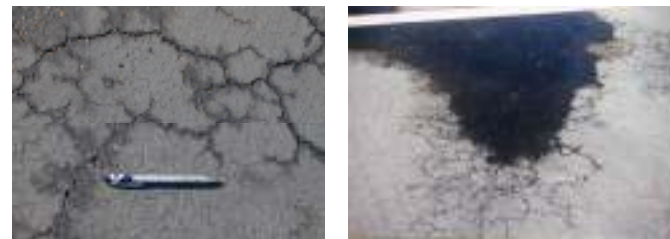
Minimal traffic interruption.  
All treated areas open at day's end.



Spider cracks form rapidly in all seal coated surfaces.



Before treatment 6 years after treatment  
Asphalt binder is strengthened.  
Aggregate breakout reduced.  
Maintenance costs significantly reduced.



Surface is not waterproof. Water penetrates!



Most surfaces look & wear like new overlay.



Surface cracks are not sealed.  
Traffic will quickly wear off this "paint".

# Maintenance treatment

# Versus

# Short-term cover up